



KANSAS GEOLOGICAL SOCIETY

BULLETIN

Volume 96 Number 6

November - December 2021

Established 1925

IN THIS ISSUE

Memorial for Larry J. Richardson

page 10

Memorial for Fred Stump

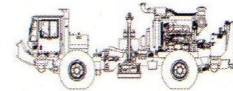
page 11

Meet the Candidates

pages 14-16



Your 1/8 page ad here



*Proudly Celebrating 25+ Years
Acquiring Seismic Data Throughout the
Continental United States*

WICHITA

Nicolle Jausel
(316) 636-5552
Nicolle@parangoneo.com

DENVER

Kim Nordberg
(303) 888-8885
Knordberg@parangoneo.com

HOUSTON

Brent Propst
(832) 643-5158
Bpropst@parangoneo.com

OKLAHOMA CITY

Joe Broussard
(405) 213-9859
Jbroussard@parangoneo.com

website: www.parangoneo.com

**Use Your KGS Library
For All Your Printing Needs**

Old photos?
Old documents?

We can scan them for you!

Robert F. Walters Digital Library

The most complete source for Kansas data

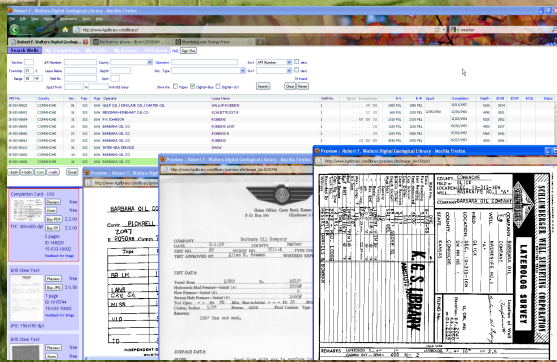
Database updated nightly

Day or Night

You can get to the data as you need it

www.kgslibrary.com

To Join: call 316-265-8676



We Invite You

**To join the
Kansas Geological
Foundation**

*\$50.00 membership is
tax deductible*

Call 316-265-8676

Or send checks to:

Kansas Geological Foundation

212 N. Market, Ste. 100

Wichita, KS 67202

Table of Contents

Features: Meet the candidates page 14-16

KGS Events: No events are scheduled

Departments & Columns:

KGS Tech Talks	4
President's Letter	7
Advertiser's Directory	8
In Memoriam	20
Professional Directory	21
Kansas Geological Foundation Cornerstone and KGF News	24-25
Kansas Geological Foundation Memorials	26-28
Exploration Highlights	30-31

ON THE COVER:

Salt deposits on a playa

Oregon

Photo by Marli Miller

CALL FOR PAPERS

The Kansas Geological Society Bulletin, which is published bimonthly in electronic format, seeks short papers dealing with any aspect of Kansas geology, including petroleum geology, studies of producing oil or gas fields, and outcrop or conceptual studies. Maximum length of papers is 6 pages as they appear in the Bulletin, including text, references, figures and/or tables, and figure/table captions. Inquiries regarding manuscripts should be sent to manager@kgslibrary.com or mailed to 212 N. Market, Ste. 100, Wichita, KS 67202. Specific guidelines for manuscript submission appear in each issue of the Bulletin, which can also be accessed on-line at the Kansas Geological Society web site at <http://www.kgslibrary.com>

SOCIETY Technical Meetings

All Technical Meetings will be on Zoom

November 3 Dr. Katie Stack Morgan, JPL NASA: *“Seeking Signs of Ancient Life in Jezero Crater with the Mars 2020 Perseverance Rover: Revisited”*

December 8 Jaime Jimenez, Paragon Geophysical - *“Past. Present and Future of Seismic”*

Please remember to check the website for the most up to date information on Technical Talks

Tech Talks are held at Landmark Square
212 N. Market—4th floor

In the Center  **Wisdom**

Note: For those geologists who need 30 professional development hours (pdh) to renew their licenses, there will be a sign-in sheet at each presentation and also a certificate of attendance.



KANSAS GEOLOGICAL SOCIETY



BOARD OF DIRECTORS

PRESIDENT

Brian Fisher

PRESIDENT-ELECT

Roger Martin

SECRETARY

Garet Dinkel

TREASURER

Tom Dudgeon

DIRECTORS

John Hastings
Preston Doll
Kerry Parham

ADVISORS

Doug Louis
Tyler Sanders

COMMITTEE CHAIRMEN

Advertising

Kent Scribner

Advisory

Annual Banquet

Doug Davis

Bulletin

Wesley Hansen

Continuing Education

Wesley Hansen

Distinguished Awards

Kent Matson

Environmental

Field Trip

Jerry Honas

Fishing Tournament

Future Plans

Tyler Sanders

Golf

Kevin Davis

New Building

Tyler Sanders

Historian

Larry Skelton

Library

Ted Jochems

Membership

Larry Friend

Nomenclature

John H. Morrison, III

Picnic

Beth Isern

Public Relations

Shooting Tournament

Larry Richardson

Technical Programs

Doug Davis

Technical Committee

Ryan Dixon

Finance Committee

Tim Hellman,

Chairman

Members: Rocky Milford, Chuck Brewer, David Doyel,
and Tom Funk

BULLETIN STAFF

EDITOR

Wes Hansen (316) 772-6188

ADVERTISING

Kent Scribner (316) 640-1154

MEMORIALS

Wesley Hansen (316) 772-6188

EXPLORATION HIGHLIGHTS

John H. Morrison, III
Independent O&G (316) 263-8281

STATE SURVEY

KS Geological Survey (785) 864-3965

SOCIETY NEWS

KGS Library (316) 265-8676

MANAGER

Wes Hansen (part time) (316) 265-8676

K.G.S. LIBRARY

PHONE 316-265-8676 **FAX** 316-265-1013
email: frontdesk@kgslibrary.com or
Web: www.kgslibrary.com

A.A.P.G. DELEGATES

Douglas Davis
2021

Wesley Hansen
2021

The KGS *Bulletin* is published bi-monthly by the Kansas Geological Society, with offices at 212 North Market, Wichita, Kansas 67202 Copyright 2021. The Kansas Geological Society. The purpose of the *Bulletin* is to keep members informed of the activities of the Society and to encourage the exchange and dissemination of technical information related to the Geological profession. Subscription to the *Bulletin* is by membership in the Kansas Geological Society. Limited permission is hereby given by the KGS to photocopy any material appearing in the KGS *BULLETIN* for the non-commercial purpose of scientific or educational advancement. The KGS, a scientific society, neither adopts nor supports positions of advocacy, we provide this and other forums for the presentation of diverse opinions and positions. Opinions presented in these publications do not reflect official



Nine Trucks Serving

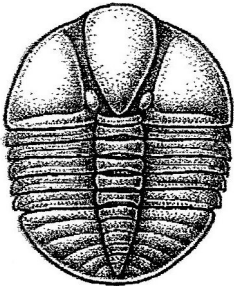
Kansas--Colorado--Texas--Nebraska--Illinois

DST's

Back Pressure testing (G1 7 G2)

Slick line services using the same Weatherford

Electronic Pressure Gauges used on DST's



1-800-728-5369

FAX 1-785-625-5620

www.trilobitetesting.com

trilobite@eaglecom.net

SHOPS LOCATED IN:

Hays, KS

Scott City, KS

Pratt, KS

Oberlin, KS

CAN YOU NAME THE CRITTER?

Sponsored by Trilobite Testing, Inc.

Is your paleo up to date?

If you know the name of the trilobite,
submit your guess via e-mail to
manager@kgslibrary.com

Remember that *Trilobite Testing* is
sponsoring your efforts, so be sure to thank
Paul Simpson the next time you see him.

**Bulletin committee members and PhD's in
Paleontology are prohibited from entering.**



Kansas Geological Society (KGS) Medallion for Scientific Distinction and Excellence

The Kansas Geological Society (KGS) Medallion for Scientific Distinction and Excellence may be given annually for peer-recognized, sustained significant scientific contributions to all facets of applied Kansas geology, including work either in Kansas or in surrounding states if the latter contributions pertain directly and significantly to Kansas geology. No more than one award may be given each year, an award does not have to be given every year, and members of the KGS Awards Committee that handle nominations for this award cannot nominate themselves for this award. The candidates need not be active KGS members, and they must be living at the time of selection. The primary consideration in the selection of a candidate shall be his or her sustained, published, significant contributions to any facet of Kansas geology. Contributions may be varied in form such as development of geologic concepts, advancement in discovery thinking, and recognized leadership in exploration concepts. Oral and/or written publications in peer-reviewed geological venues is a requisite criterion for any candidate for this award. The name of a candidate shall be presented by the Awards Committee to the KGS Board of Directors for their approval. Once approved, the recipient shall be presented an appropriate award in the form of a medallion or plaque recommended by the Awards Committee and approved by the Board of Directors at the annual business meeting of the society. This is a new award given by the KGS for distinction and achievement in Geological research in Kansas.

Awards Committee members are Sal Mazzullo, Mike Dealy and Alfred James.

President's Letter

Greetings to my fellow KGS members,

First of thanks for electing me as your president for year 2021, it has been a “wild ride and definitely not an easy slide” for myself and our KGS board for this year! (Way upstate New York state humor)

Lots of interesting actives have happened since I have written my last Presidential letter. First thing we need to acknowledge and remember our members who have succumbed to the Covid pandemic. Earlier in September I felt good enough to attend the Regional AAPG Meeting in Tulsa, the meeting was very upbeat and the talks were very informative. The nature and organization of the international AAPG society may be changing in the near future. Please continue to attend future meetings and support by your membership in this excellent organization. Currently as I write this letter the Kansas Geological Society is negotiating to purchase a suitable building from the Kansas Geological Foundation based upon appraised value. The goal of your KGS board is to lower our overhead by owning our own building and not to pay any excessive rental costs that will make us less profitable. If the KGS is not successful with these negotiation's we will either consider continue renting, purchasing the building where we are currently located in or look at other large enough sized space to rent or purchase. For your information and while I am your president, along with the KGS Board – we will never give up or nor sign away any of its assets to any secondary parties for any reason.

World crude oil prices are still very dynamic for our domestic market and especially for Kansas. Our Kansas oil field has been burdened by the loss of experienced and skilled labor for field operations, lack of equipment replacement parts and seasonable wet field conditions. We now have acute shortages of tubular and casing goods along with new or good used pumping units and a lot fewer oil field service companies to choose from. We are all finding a lot of experienced people had left the business to find other employment or have retired. We all have been suffering from recent rising costs from fuel prices. As always before - if world oil prices manage to stay up for some time - the equipment shortages and the work force will adjust themselves to meet market demands. So far there been no Federal or State Government overreach into the Kansas Oil Business such as changes in the tax laws, well permitting and operations. For the good of our country a strong domestic oil business is very strategic to have so we can be free from foreign influence and control. The Biden Administration is trying force the premature “greening” of the American economy and now is being criticized for the current higher energy costs from all sides. The oil business is saying – we told you so! As an optimist I believe common sense will eventually prevail and our current country's energy policies and past decisions will be altered.

Remember the Walters Digital Library (WDL) membership is tied to a single person's membership in the Kansas Geological Society and Paper Library. **There are no Company Memberships and sharing of WDL passwords is strictly prohibited.** A new pricing category will be discussed and will be implemented for Company Memberships sometime in the first quarter of 2022. Also the KGS board will be implementing a new security system that is now computer specific in the first quarter of 2022 to enforce existing WDL policy; any detected violations will result in the cancelation of their WDL membership.

Please be sure to choose and vote for our excellent slate of candidates for 2022. Everyone have a good Christmas season and to be sure to spend time with family and friends. Thanks again for choosing me to serve as your president for year 2021.

Brian G. Fisher



AAPG ACE and Section Meeting

Updates For 2022

Mid-Continent Biennial Field Conference

Postponed until Fall of 2022 Rolla, MO

ADVERTISER'S DIRECTORY

Duke Drilling	<i>page</i> 29
Kansas Geological Foundation	22
Murfin Drilling Company, Inc	29
PARAGON Geophysical Services, Inc	2
Professional Directory	21
Trilobite Testing	6
Walters Digital Library	2

Log in to

Walters Digital Library At

www.kgslibrary.com

Log in as our guest

and see the Society's Database

A convenient way to see what you might want to order!

Call or email your order to:

316-265-8676

frontdesk@kgslibrary.com

ADVERTISER'S RATES: 2020

Full Page	B&W	Color
6 issues	\$2,000	\$2,500
3 issues	\$1,080	\$1,325
1 issue	\$480	\$525
1/2 Page		
6 issues	\$1,000	\$1,500
3 issues	\$540	\$825
1 issue	\$225	\$350
1/4 Page		
6 issues	\$600	\$900
3 issues	\$325	\$525
1 issue	\$150	\$250
1/8 Page		
6 issues	\$300	\$500
3 issues	\$175	\$325
1 issue	\$75	\$185
Professional Ad (Business Card)		
6 issues	\$90	\$180

Preliminary Notice

Prior to the 2022 billing for KGS membership, an email will be sent for Members to **OPT IN** for a printed version of the KGS Bulletin. The plan is that the Bulletin will be digital online for viewing or printed and mailed for those that choose that path. Those that choose to have a print version will have an additional charge added to their membership renewal. The estimated cost for a printed and mail copy of the Bulletin is in excess of \$25.00 per year,

Robert F. Walters Digital Library

Log in as our Guest

username: guest

password: guest

316-265-8676



Let Us Print Your Geo Reports
And Save Your Time For Finding More Oil & Gas

Top Quality Color Printing For Our Membership

Email your files to: kgsorders@gmail.com

The Kansas Geological Society & Library

Memorial

Larry J. Richardson

Larry Jack Richardson went to heaven 10/2/21.

He was born in Kansas City, MO 2/16/1946 to Donald and Hilda Richardson and passed away at Wesley Hospital in Wichita, KS. He was loved by many and will be sorely missed until we see him again.

Larry lived in Colony, KS and met his future wife and love of his life Linda (Colgin) in the third grade. Thus began a lifelong match that lasted for 55 years. They went on to have two children Bradford and Jennifer. Larry was always a family man and loved us dearly. After his graduation from Wichita State University, he worked as a petroleum geologist until his retirement from Pickrell Drilling company who he worked for 41 years.

Always willing to help his fellow man, Larry was involved in Hugh O Brien Youth Foundation, Junior Achievement at Derby High School. Larry helped found The Derby Running Club in the early 1980's and directed the summer biathlon yearly. He was a past president and honorary member of the Kansas Geological Society, past president of the Kansas Geological Foundation, served on the advisory board of the Kansas Geological Survey as well as a member of the AAPG for about 50 years. He coached BB gun, was a faculty advisor then fund raiser for WSU shotgun team, was a member of the Air Capital Gun Club and enjoyed shooting sports. He was always generous with his time and never met a stranger. He was a true Christian in that he loved others as Christ does.

He was preceded in death by parents Donald and Hilda, sister Pamela and grandson Chaz Parrott. He is survived by wife Linda, children Bradford (Rogelio) and Jennifer (Chris) Parrott. Grandchildren Kara and Brett (Alexus) Parrott, Kody, Keely and Kaden Richardson and beloved great- granddaughter Clementine who he always referred to as baby cakes. Brothers Mike (Pam), Steve (Peggy) and Kent (Donna) and sisters Jill (Mike) Wilkins and Judi Sims. Numerous nieces and nephews and great nieces and nephews.

The Larry Richardson Shooting Team scholarship at Wichita State University has been established as well as a Larry Richardson memorial at the Kansas Geological Foundation.



Memorial

Fredrick Stump

Fredrick "Fred" Stump, 92, geologist, passed away Monday, September 13, 2021. Preceded in death by his grandparents, George and Mayme Larkin; parents, Eleanor and Fredrick W. Stump, Sr.; brothers, Joseph and Gerard Stump. Survived by his loving wife, Elizabeth "Betty"; sons, Bill (Therese), Fred "Rick" (Diane) and Pat; 5 grandchildren, Jeremiah (Katie) Stump, Joseph (Jennifer) Stump, Kate (Nik) Statz, Maureen (Matt) Horne, and Maggie (Justin) Roehrich; 13 great-grandchildren, Eli Stump, Nick Stump, Matt Stump, Emillie Stump, Megan Stump, Zach Stump, Rowan Statz, Quinlyn Statz, Lucy Horne, Emma Horne, Jacob Horne, Anna Roehrich and Rachel Roehrich. Rosary, 7:00 p.m., Thursday, September 16, 2021; Funeral Mass, 10:00 a.m., Friday, September 17, 2021, both at St. Francis of Assisi Catholic Church, 861 N. Socora, Wichita, KS. Family requests that masks be worn. In lieu of flowers, memorials established with Kansas Geological Foundation, 212 N. Market, Wichita, KS 67202; Harry Hynes Memorial Hospice, 313 S. Market, Wichita, KS 67202, and St. Francis of Assisi Rebuild My Church Campaign, 861 N. Socora, Wichita,

Get Your Maps copied at the KGS library

We can scan, copy, and print up to 44" wide

Color or Black & White

Solid Color @ \$4.00/sq. ft.

Line maps with color @ \$3.00/sq. ft.

In conversation with current KGS president, Brian Fisher, he asked that I place an announcement for any KGS members that seek wellsite geologic work to send their names and info to me at:

manager@kgslibrary.com

If calls come in to the KGS seeking a consulting geologist, names will be given on a rotating basis through Rhonda.

Preference will be given to geologists who have professional ads in the KGS Bulletin.

Please be advised, that the KGS has not had calls, of this nature, for many years. Brian did, however, want interested parties to be in line for such work.

The Following Are For Sale

Kansas Completion Cards:

Several sets (call for more information)

Oklahoma Completion Cards

New Mexico Completion Cards

North Dakota Completion Cards

Utah Completion Cards

Microfiche Electric Logs

Kansas Oklahoma Texas

Geological Office Furniture:

- 8-drawer completion card cabinets
- 7-drawer cabinets
- Map cabinets—metal—2 available
- Map racks—different sizes

Call: 316-265-8676 Ask for Ted

*The KGS Library is pleased to
announce a new service*



Creating
LAS files
from our logs
or yours

**\$20.00 per
curve!!**

Quick
turn-around

Send us your log file
or tell us which of
ours you would like
converted.

316-265-8676

EMERGENCY NOTICE

ATTENTION TO ALL LOCAL AREA KGS MEMBERS

The KGS Library plans to move to a new building, hopefully by the end of the year. OK Transfer and Storage will handle all of the heavy lifting and moving of our files, furniture and equipment. However, there are several projects that need to be finished ahead of the move. These projects consist of organizing our data, moving files etc. from the basement for recycling or disposal, and any other needs our move director, Tyler Sanders, deems warranted. The KGS needs volunteers for all of this massive undertaking. Please contact Tyler at 316-807-0197 or thsanders7@gmail.com One can also contact Wes Hansen at the KGS Library 265-8676.

A shout out to Kansas Oil and Gas Industry

Service Companies

**Oil prices are recovering nicely with WTI over \$80 per barrel
and Kansas posted price over \$70 per barrel**

Now is the time to resume advertising in the KGS Bulletin

**Let our several hundred members know that your company is
still active and ready to work.**

Your half page ad would look great here.

Color or blank and white

Contact Kent Scribner at 316-640-1154

Meet the Candidates - VP President Elect



Preston Doll

Education:

M.S. in Geology 2015 Oklahoma State University

Thesis: (Determining Structural Influence on Depositional

Sequences in Carbonates Using Core-Calibrated Wireline Logs: Mississippian, Mid-Continent, U.S.A)

B.A. in Geology 2013 Wichita State University

Professional Experience:

Geologist Stelbar Oil Corporation, Wichita, KS 2019 – Present

Geologist II, Apache Oil Corporation, Midland, TX 2015-2019

Geology Intern, Apache Oil Corporation, Houston, TX Summer 2014

Regulatory Intern, Chesapeake Energy Corporation, Oklahoma City, OK Summer 2013

Geology Intern, Vess Oil Corporation, Wichita, KS 2011-2013

Professional Affiliations:

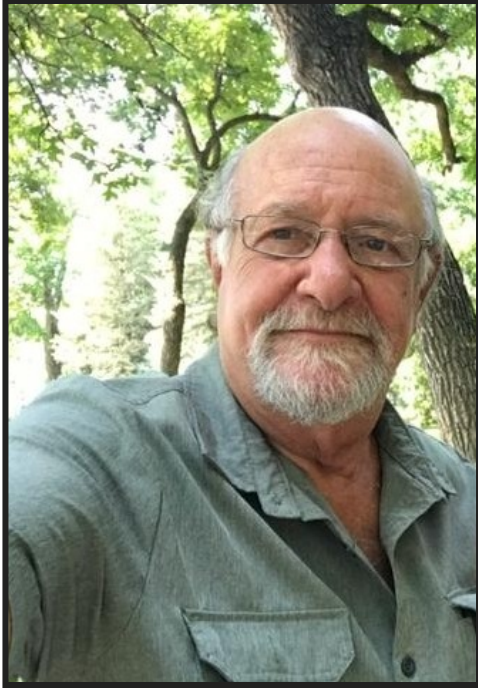
AAPG

Kansas Geological Society

Unopposed position

Write-in candidate

Meet the Candidates - Secretary/Treasurer



Sal Mazzullo

Education:

BS and MS in geology Brooklyn College 1969 and 1971, PhD geology Rensselaer Polytechnic Institute 1974

Professional Experience:

Senior Research Geologist Texaco Research Lab, Houston 1975;

Assistant Prof, Univ. Texas Permian Basin, Odessa TX 1975-1978;

Mgr Stratigraphic Exploration, Union Texas Petroleum, Houston and Midland TX 1978-81;

Petroleum Geological Consultant, Midland TX 1981-87

Professor of Geology, WSU 1987-2012

Petroleum exploration, Mazzullo Exploration LLC 2013-present

Professional Affiliations:

AAPG, GSA (Fellow), Kansas Geological Society
Permian Basin Section SEPM (honorary life member) KGS (honorary life member) SEPM International Assoc. Sedimentologists



Lori Landes

Education:

B.S. Geology, Wichita State University 1983

Professional Experience:

Slawson Exploration, Geotech, 1976-1983

Energy Exploration, Geologist, 1983-1988

Brito Oil, Geologist/Geotech, 1988-1991 2014-Present

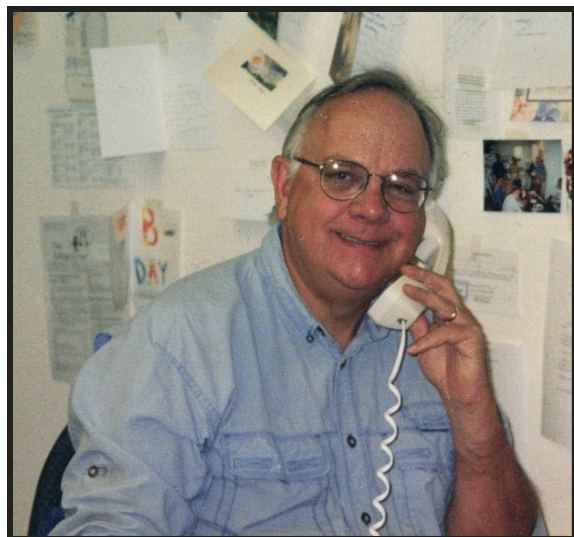
Abercrombie Energy Geologist/Geotech, 2007-2014

Professional Affiliations:

Kansas Geological Society

American Association of Petroleum Geologists

Meet the Candidates - Director



Pete Clute

Education:

A.B. Degree in Geology from Lafayette College 1971

M.S. Degree from SUNY-Fredonia-1974

Professional Experience:

1974-Western Nuclear, Casper, WY. - Jr. Geologist

1974-1977-Anderson Oil Company, Denver, CO - Geologist

1977-1978-InterAmerican Petroleum Company, Denver, CO - Geologist

1978-1980-Northern Natural Gas Company, Denver, CO-Geologist

1980 to Present - Independent

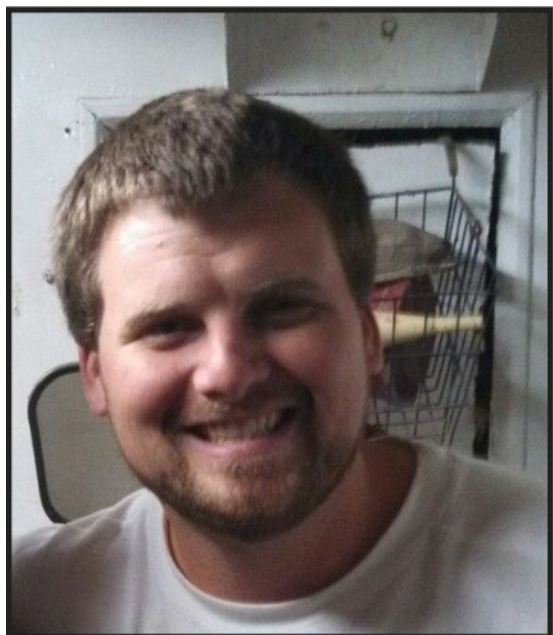
Started Clute Oil Corporation in 1984, Kansas operator since 1989.

Professional Affiliations:

Kansas Geological Society, Rocky Mountain Association of Geologists, AAPG, SPE, AIPG (CPG #6038), Wyoming Professional Geologist (PG-815)

Active with the Colorado Section - AIPG for many years as Secretary, Vice President, President-Elect, President and finally Editor (Colorado Section Newsletter)

Currently serving on the board of the Cherry Hills Village Sanitation District



Education

B.S. Geology- Wichita State University

Professional Experience

Darrah Oil Company LLC. Geologist, 2009 – Present

Consulting Petroleum Geologist, 2009 - Present

Star Street Ventures, Geologic Technician, 2007 – 2009

Kansas Geological Survey, Sample Technician, 2006 – 2007

Professional Affiliations:

Kansas Geological Society; AAPG; RMAG

MCS of AAPG Meeting in Tulsa, OK

October 2-5, 2021

A quick shout out to Tara Benda and the committee for the great job in putting on the MCS meeting in Tulsa. By all accounts the meeting was a resounding success. All of the vendor booths were sold. Attendance was in excess of 400, a great showing in these current times. Let us all hope for continued improvement in our industry so that our next MCS meeting in Oklahoma City in 2023 will be even better.

Wichita area KGS members and spouses in attendance included Doug Davis, Mike Bryan, Marc Summervill, Curtis Covey, Brian Fisher, Doug Louis, Brian Wilhite, Dennis Hedke, David and Martha Clothier, Sal and Chellie Mazzullo and yours truly, Wes Hansen. If I failed to mention anyone, it falls on my feeble memory or lack of seeing you.

There were many great talks, posters and social activities.

Next fall, the Biennial Field Conference will be held in October. Dr. Wan Yang will head the conference with a field trip to the St. Francis Mountains area of SE Missouri. The trip will be headquartered in Rolla, MO. The final dates have not been set as yet, but please leave your schedule open for the first part of October 2022.

KGS 2021 Golf Tourney

A great big thanks to Kevin Davis and his committee for a successful golf tourney that was held October 11, 2021 at Terradyne CC in Andover, KS. Rusty Mourning, Will Darrah and Seth Evenson were Kevin's committee members. A special thanks to Rob Patton at Terradyne for hosting the tourney. Madison Moore from the KGS handled the check in along with other support staff.

2021 KGS Golf Tournament Sponsor List

CHS McPherson Refinery, Inc.

Paragon Geophysical

McGinness Energy

Red Oak Energy, Inc.

Coffeyville Resources

Kirk Rundle Consulting

Mull Drilling

Swift Services, Inc.

J. Fred Hambright, Inc.

Martin Pringle

Pickrell Drilling

McCoy Petroleum Corp.

Anderco, LLC

Baker Hughes

Pro-Stim Chemicals, LLC

Fossil Drilling

Eli Wireline Services

Sunrise Oilfield Supply

MVP

Thoroughbred Associates, LLC

Corrosion DC

Plains Marketing, L.P.

Murfin Drilling Company, Inc.

Brito Oil Company, Inc.

Maclaskey Oilfield Services

Duke Drilling

White Exploration

Bear Petroleum, LLC

Trans Pacific Oil Corp

Robert F. Walters Digital Library

The most complete source for Kansas data

Database updated nightly

Day or Night

www.kgslibrary.com

To Join: call 316-265-8676

The screenshot displays the Robert F. Walters Digital Geological Library website. The main content area shows a table of well records with columns for AFE No., County, Sec, Twp, Rge, Operator, Lease Name, Well No., Spot, Location, N/E, E/W, Soud, Completion, Depth, EIB, EOP, E/G, and Status. The table lists several wells in Comanche County, including those operated by Gulf Oil, Mesman-Hendhart Oil Co., F. K. Johnson, Barbara Oil Co., and Inter-Sea Service.

Below the table, there are several preview windows. One window shows a 'Completion Card - 100' for Barbara Oil Co. with details like 'Contr. PICKRELL 7047' and 'e. 20508 Comm. J'. Another window shows a 'Drill Stem Test' for the same well. The largest preview window is a 'LATEROLOG SURVEY' form for well 1911-16, operated by Barbara Oil Company. The form includes fields for well name, location, and completion date, and contains a detailed log of survey data.

In Memoriam

KGS and Industry Members Lost in 2020 and 2021

2020

Lloyd K. Parrish, Jr.

Bruce A. Reed

Bob Scull

Thornton E. Anderson

Ronald S. Schraeder

Billy Gene Ree

Philip L. Hart

2021

Lee Banks

Richard “Dick” Smith

Timothy J. Lauer

Walter Innes Phillips

George N. Mueller

Jack W. Gabbert

Fred Stump

Larry J. Richardson

Attention:

The KGF has several empty completion card cabinets for sale.

The price is \$50/cabinet with buyer responsible for pick up.

Also, many empty file cabinets and desks etc. are available as well.

Please contact Ted Jochems or Tyler Sanders through

the KGS at 316-265-8676

PROFESSIONAL DIRECTORY

Kirk Rundle
Consulting Geophysicist

3D Seismic Design, Acquisition to Processing QC.,
Interpretation and Analysis, Subsurface Integration
7340 W. 21st. N., Ste. 100
Wichita, Kansas 67205

Office: 316-721-1421 Fax: 316-721-1843

ROGER L. MARTIN
Independent Petroleum Geologist

200 E 1st St, Ste 405, Wichita, KS 67202
Cell: 316-833-2722 Office: 316-250-6970
KS Field Cell: 316-655-1227

Covey - The Well Watchers

One Thousand Wells and Counting”

Curtis E. Covey Wellsite Petroleum Geologist

ALFRED JAMES III
Petroleum Geologist
Kansas - Colorado - Utah

P.O. Box 218 Augusta, KS 67010

SIPES # 1111



GRAVITY OIL
LLC

ELI J. FELTS
CONSULTING PETROLEUM GEOLOGIST

316.204.5059 E.J.FELTS47@GMAIL.COM

- VERTICAL & HORIZONTAL WELL-SITE SUPERVISION
- PROSPECT GENERATION & EVALUATION
- WELL-LOG ANALYSIS
- DIGITAL MAPPING SERVICES & GEOLOGICAL REPORTS
- KCC & COMPLIANCE SPECIALIST
- PROFESSIONALLY INSURED

COMPETITIVE PRICING & STATE OF THE ART SERVICES YOU CAN COUNT ON
CALL TODAY & RECEIVE (1) FREE DAY WELL-SITE TO NEW CLIENTS

M. ((Brad))ford Rine, Geologist

Licensed, Registered, Certified

PROSPECT EVALUATION

PROSPECT ORIGINA-
TION

WESLEY D. HANSEN
Consulting Geologist

Well site Supervision • Geologic Studies
212 N. Market, Ste 257
Wichita, Kansas 67202
Office/Mobile: (316) 772-6188
whansen4651@sbcglobal.net
40 Continuous Years in the Kansas Oil

**Your business card ad
Could be right here**



INDEPENDENT
OIL & GAS SERVICE, INC.

JOHN H. MORRISON, III
President

www.IOGsi.com Phone: 316-263-8281
3909 N. Sweet Bay St. Fax: 316-263-0874
Wichita, Kansas 67226-3501 Email: jmorrison@iogsi.com

MELLAND ENGINEERING, INC.

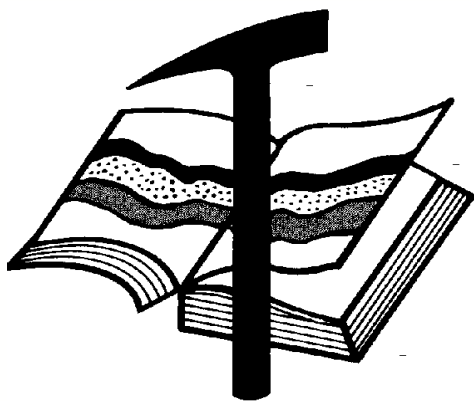
Petroleum Engineering & Geological Consulting

James E. Melland, P.E., P.G.

P.O. Box 841, McPherson, KS 67460

**Your business card ad
Could be right here**

**Your business card ad
Could be right here**



Kansas Geological Foundation

Web Site: www.kgfoundation.org

**212 North Market
Wichita, Kansas 67202**

A not-for-profit educational and scientific corporation

GOALS:

- promote geology and earth science
- preserve geological records
- establish memorials and endowments
- support field trips and seminars
- financial aid and grants to students

PLEASE HELP SUPPORT THE FOUNDATION

Kansas Geological Foundation Services

The Kansas Geological Foundation provides the following services as a part of the organization's commitment to educate the public regarding earth science.

Speaker's Bureau

A list of speakers available to talk about various aspects of geology may be obtained by contacting Wes Hansen at the KGS Library, 265-8676. This service is free to the public.

DVD/Videotape Library

The KGF maintains a DVD & videotape library focused primarily on the various fields of earth science. These tapes may be checked out without charge by the public. To obtain a list of tapes, please contact the KGS Library, 212 N. Market, Ste. 100, Wichita, KS 67202, or call Wes Hansen at 265-8676.

The Kansas Geological Foundation was founded in March, 1989 as a not-for-profit corporation under the guidelines of section 501(c)(3) of the tax code to provide individuals and corporations the opportunity to further the science of geology. It is dedicated to providing charitable, scientific, literary and educational opportunities in the field of geology for the professional geologist as well as the general public.

KGF can receive in-kind donations through which the donor may receive a tax deduction. Of equal importance, the KGF provides the financial resources to sort, process and file this data at the KGS library. If you have a donation to make, please contact the KGF at 265-8676.

Your tax-deductible membership donation helps to defray the cost of processing donations and to support public education programs about the science of geology. Annual membership begins at \$50.00 per year. Donations of \$100.00 or more are encouraged through the following clubs:

Century Club	\$ 100 to \$ 499
\$500 Club	\$ 500 to \$ 999
Millennium Club	\$1000 to \$5000
President's Club	\$5000 and over

Kansas Geological Foundation

Kansas Geological Foundation News

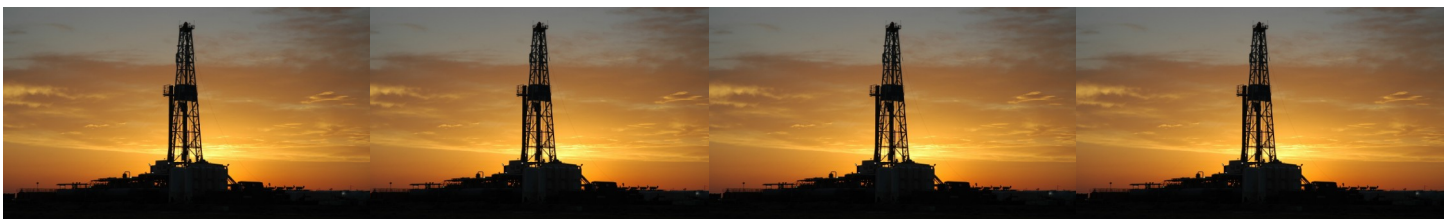
Fall 2021 KGF Scholarship Recipients

Name	University	Scholarship	Amount
Skylar Kaminski	Kansas State University	Robert Cowdery Scholarship KGF Scholarship	\$1000
Riley Allen	Fort Hays State Univ.	KGF Scholarship	\$500
Riley Sanford	Fort Hays State Univ.	KGF Scholarship	\$500
Bryan Wooten	Fort Hays State Univ.	KGF Scholarship	\$500
Carrie Brooks	Kansas State University	KGF Scholarship	\$500
Rowdy Farris	University of Kansas	KGF Scholarship	\$500
Nicholas Ferry	University of Kansas	KGF Scholarship	\$500
Dustin Heese	University of Kansas	KGF Scholarship	\$500

KGF Grants

\$1000 to Vidhesh Shukla

Graduate Student from Kansas State University



Kansas Geological Foundation News

Students: The KGF awards scholarships each December and May. Check with your department chairs for applications. You must submit complete applications by the deadline.

Scholarship Applications for the Spring semester will be due by December 1, 2021.

Grants to help with research on Kansas related geology are also considered for aid.

If you are in the KGS Library and see Ted Jochems or any of the integrators, give any of them a great big thanks for their efforts in continuing the tedious process of examining, scanning and integrating new logs and geologist's reports etc. into our library and the WDL.

The Kansas Geological Foundation Needs You!



By permission

The KGF provides the financial resources to sort, process and file, in-kind donations of geological data at the KGS library. Due in large part to the KGF this unique and rare well of information is being made available to all. Please consider telling your company management and colleagues about the benefits of a library that continues expanding in part because of the KGF.

We very much value and need your financial support.

KGF Officers and Board Members

President - Michel Runnion

Vice President - Chris Steincamp

Treasurer - Corey Baker

Secretary - Debra FitzGerald

Board Members

Dave Callewaert

Mark Galyon

Ryan Dixon

Mark Thompson

Will Darrah

Scholarships - Maurice Korphage

Publicity - Wes Hansen

Integration Update as of May 31, 2021

From January 1 through June 30, 2021, a total of 19,323 documents were examined by the integrators. A total of 3300 new documents were added to the WDL along with 1992 rescanned documents to replace poor images. This represents a 17.08% increase to the WDL.

PLEASE SUPPORT THE INTEGRATION PROJECT BY DONATING FINANCIALLY TO THE KANSAS GEOLOGICAL FOUNDATION

Submitted by Ted Jochems

Thank you to the Current KGF Members

The Kansas Geological Foundation gratefully acknowledges the generous contributions from the following Individual and Corporate Donors during our yearend 2020 fundraising. From the Basic Membership up through the Millennium Class Members, we are deeply appreciative of your generosity in one of the most challenging times in our history. We wish you every success in the years and decades ahead.

Millennium Club

Steve Frankamp

Don Beauchamp
Paragon Geophysical Services, Inc.
John O. Farmer, Inc.
Gore Oil Company
Hedke Geoscience Consulting, LLC
Derry Larson

Richard Jordan

Roger McCoy
Herman L. Loeb LLC
K & N Petroleum, Inc.
Bob O'Dell
Tom Pronold
Larry Richardson

Murfin Drilling Company, Inc.

Kirk Rundle Consulting, LLC
William H. Shepherd
Northern Lights Oil Company
Shakespeare Oil Company, Inc
Berexco, LLC

500 Club

Century Club

C.W. Todd Aikins III
Val Energy, Inc.
Tomco Oil, Inc.
Holly Burke
Dave Callewaert
Scott Corsair
Marshall Crouch III
James Daniels
Jene C. Darmstetter
Red Oak Energy, Inc
Dixon Operating Co., LLC
David Doyel

W. Bryce Bidleman
Debra FitzGerald
Larry Friend
Wes Hansen
Alfred James III
George R. Jones
Kenneth M. LeBlanc
Chellie Mazzullo
RJM Company
Terra Firma Exploration
Bill Petersen

Sunrise Oilfield Supply, LLC
M. Brad Rine
A. Scott Ritchie
Michel Runnion
Richard J. Saenger
Mark Shreve
Trilobite Testing, Inc.
Richard D. Smith†
Chris Steincamp
Fred Stump
Darrel G. Walters

Basic Membership

Phil Askey
Briscoe Petroleum LLC
Raul Brito
Dean Britting
William E. Chew
Kent Crisler
Alan DeGood
Martin Dubois
Sarlan Resources Inc.
Doug Frickey
Harvey Gough
Tim Hellman

F. Judson Hipps
Jerry Honas
Ronald L. Irion
Ted Jochems
Mike Kidwell
Steve Kirkwood
M.L. Korphage
Larson Engineering, Inc.
William C. Manthey III
Mikeal Maune
Sal Mazzullo
Jon F. Messenger

Rusty Mourning
Quincy Ridge Petroleum, Inc.
Troy Phillips
John Rose
Bob Schreiber
Stewart Producers, Inc.
Robert Stolzle
Mark Thompson
John Washburn
Midco Exploration
JRZ Enterprises, LLC
Brian Fisher

Kansas Geological Foundation Memorials

KGS Member	Date Deceased	Memorial Established
Dan Bowles	09/89	1990
John Brewer	10/89	1990
George Bruce	08/89	1990
Robert Gebhart	01/90	1990
Ray Anderson, Jr.	11/90	1990
Harold McNeil	03/91	1991
Millard W. Smith	08/91	1991
Clinton Engstrand	09/91	1991
M.F. "Ted" Bear	10/91	1991
James & Kathryn Gould	11/91	1991
E. Gail Carpenter	06/91	1993
Benton Brooks	09/92	1992
Robert C. Armstrong	01/93	1993
Nancy Lorenz	02/93	1993
Norman R. Stewart	07/93	1993
Robert W. Watchous	12/93	1993
J. George Klein	07/94	1994
Harold C.J. Terhune	01/95	1995
Carl Todd	01/95	1995
Don R. Pate	03/95	1995
R. James Gear	05/95	1995
Vernon Hess	06/95	1995
E. K. Edmiston	06/95	1995
Jack Rine	07/95	1995
Lee Cornell	08/95	1995
John Graves	10/95	1995
Wilson Rains	10/95	1995
Heber Beardmore, Jr.	09/96	1996
Elmer "Lucky" Opfer	12/96	1996
Raymond M. Goodin	01/97	1997
Donald F. Moore	10/92	1997
Gerald J. Kathol	03/97	1997
James D. Davies	08/88	1997
R. Kenneth Smith	04/97	1997
Robert L. Dilts	05/97	1997
Delmer L. Powers	06/72	1997
Gene Falkowski	11/97	1997
Arthur (Bill) Jacques	01/98	1998
Bus Woods	01/98	1998
Frank M. Brooks	03/98	1998
Robert F. Walters	04/98	1998
Stephen Powell	04/98	1998
Deane Jirrels	05/98	1998
William G. Iversen	07/98	1998
Ann E. Watchous	08/98	1998
W.R. "Bill" Murfin	09/98	1998
Donald L. Hellar	11/98	1998
Joseph E. Rakaskas	01/99	1999
Charles W. Steincamp	02/99	1999
Robert and Betty Glover	10/96	1998
Howard E. Schwerdtfeger	11/98	1999
W. W. "Brick" Wakefield	03/99	1999
V. Richard Hoover	01/00	2000
Warren E. Tomlinson	01/00	2000
James A. Morris	01/00	2000
Eric H. Jager	03/00	2000
Kenneth W. Johnson	03/00	2000

Kansas Geological Foundation Memorials

KGS Member	Date Deceased	Memorial Established
Dean C. Schaaque	03/00	2000
Fred S. Lillibridge	05/00	2000
Jerry A. Langrehr	07/00	2000
Clark A. Roach	07/00	2000
Floyd W. "Bud" Mallonee	10/00	2000
Ralph W. Ruuwe	09/00	2000
Robert L. Slamal	02/01	2001
Jerold E. Jespersen	06/01	2001
William A. Sladek	06/01	2001
Harlan B. Dixon	06/01	2001
Edward B. Donnelly	08/01	2001
Richard P. Nixon	02/02	2002
Robert W. Frensley	12/01	2002
Gerald W. Zorger	01/02	2002
Don L. Calvin	03/02	2002
Claud Sheats	02/02	2002
Merle Britting	2002	2002
Harold Trapp	11/02	2002
Donald M. Brown	11/02	2003
Elwyn Nagel	03/03	2003
Robert Noll	09/03	2003
Benny Singleton	09/03	2003
Jay Dirks	2003	2003
J. Mark Richardson	02/04	2004
John "Jack" Barwick	02/01	2004
Richard Roby	03/04	2004
Ruth Bell Steinberg	2004	2004
Gordon Keen	03/04	2004
Lloyd Tarrant	05/04	2004
Robert J. "Rob" Dietterich	08/96	2004
Mervyn Mace	12/04	2004
Donald Hoy Smith	04/05	2005
Richard M. Foley	06/05	2005
Wayne Brinegar	06/05	2005
Charles B. Moore	09/96	2005
Jack Heathman	05/06	2006
Charles Kaiser	09/06	2006
Rod Sweetman	08/06	2006
Karl Becker	10/06	2006
Frank Hamlin	10/06	2006
Marvin Douglas	12/06	2006
Robert W. Hammond	04/07	2007
Eldon Frazey	04/07	2007
Pete Amstutz	05/07	2007
Charles Spradlin	05/07	2007
Donald R. "Bob" Douglass	09/07	2007
Vincent Hiebsch	11/07	2007
Glen C. Thrasher	03/08	2008
Peg Walters	06/08	2008
Theodore "Ted" Sandberg	07/08	2008
James Ralstin	11/08	2008
Earl Brandt	04/09	2009
Walter DeLozier	05/09	2009
Don D. Strong	1/10	2010
John Stone	02/10	2010
Craig Caulk	03/10	2010
Joseph E. Moreland, Jr.	03/10	2010

Kansas Geological Foundation Memorials

KGS Member	Date Deceased	Memorial Established
Gene Garmon	03/10	2010
James F. Dilts	05/10	2010
Jerry Pike	05/10	2010
Donald Hollar	06/10	2010
Delbert Costa	08/10	2010
John Tanner	08/10	2010
William (Bill) Owen	09/10	2010
Harold (Hal) Brown	10/10	2010
Edmund G. Lorenz	11/10	2010
Thomas E. Black	05/11	2011
Wayne E. Walcher	07/11	2011
Henry F. Filson	07/11	2011
Thomas Ray	07/11	2011
Edgar E. Smith	09/11	2012
Marilyn Messinger	06/13	2013
Micheal Mitchell	09/13	2013
Orvie Howell	11/13	2013
James Thompson	11/13	2013
Dick Rowland	09/13	2014
Robbie Thompson	12/13	2014
Kris Kennedy	04/14	2015
Annette Hedke	02/15	2015
James Devlin	04/15	2015
Robert Gensch	09/15	2015
Jerald Rains	05/16	2016
Max Houston	05/16	2016
Robert "Gus" Messinger	01/17	2017
Jimmy Wayne Gowens	04/17	2017
Walter H. Martz Jr.	01/18	2018
Gary Sandlin	01/17	2018
Douglas McGinness	12/16	2018
Allen Siemens	06/18	2018
Ernest R. "Ernie" Morrison	09/18	2018
E. G. "Elbie" McNeil	12/18	2018
Robert Maxwell (Bob) Euwer	1/19	2019
J. Fred Hambright	12/18	2019
W. Lynn Watney	7/19	2019
Byron Hummon	12/18	2019
Mike Raymond	11/19	2019
James Roberts, Jr.	3/19	2019
Herb Johnson	8/19	2020
Lloyd Parrish	2/20	2020
Bruce Reed	5/20	2020
Bob Scull	6/20	2020
Thornton E. Anderson	7/20	2020
Don Shawver	12/16	2020
Phillip Hart	12/20	2021
Timothy Lauer	05/21	2021
Fredrick Stump	09/21	2021
Larry J. Richardson	10/21	2021



18 Drilling Rigs
To depth of 9,500 ft.



WESTERN KANSAS
SOUTHERN NEBRASKA
EASTERN COLORADO
OKLAHOMA PANHANDLE

For contract information contact:

William Murfin
Drilling Manager

316-258-8888 (Direct)
316-267-3241 (Main)

250 N. Water, Ste. 300
Wichita, KS 67202

DUKE
DRILLING COMPANY

ROTARY DRILLING CONTRACTOR

620 Hubbard PO Box 823
Great Bend, KS 67530

100 S. Main, Ste. 410,
Wichita, KS 67202

Your Company

BULLETIN CONTENT POLICY

Effective January 1, 2018, only ads for service companies and geologists offering their services will be permitted in the KGS Bulletin. Furthermore, only content of geologic interest or official KGS functions (technical talks, annual banquet, golf tourney, picnic etc.) will be permitted in this bulletin. This policy is in keeping with maintaining a professional standard for this publication. Any interpretation of this policy rests solely with the editor of this bulletin.



AAPG Needs You!

Professional geoscientists, share your world!

The Mid Continent Section has 17 AAPG Student Chapters, but only 3 Visiting Geoscientists...which makes it almost impossible to have a professional geoscientist visit to each school at least once a year or even once every two years. The aim of AAPG's program is to give students a flavor of a professional life in energy resources. It also hopes to encourage dialog between industry and academia.

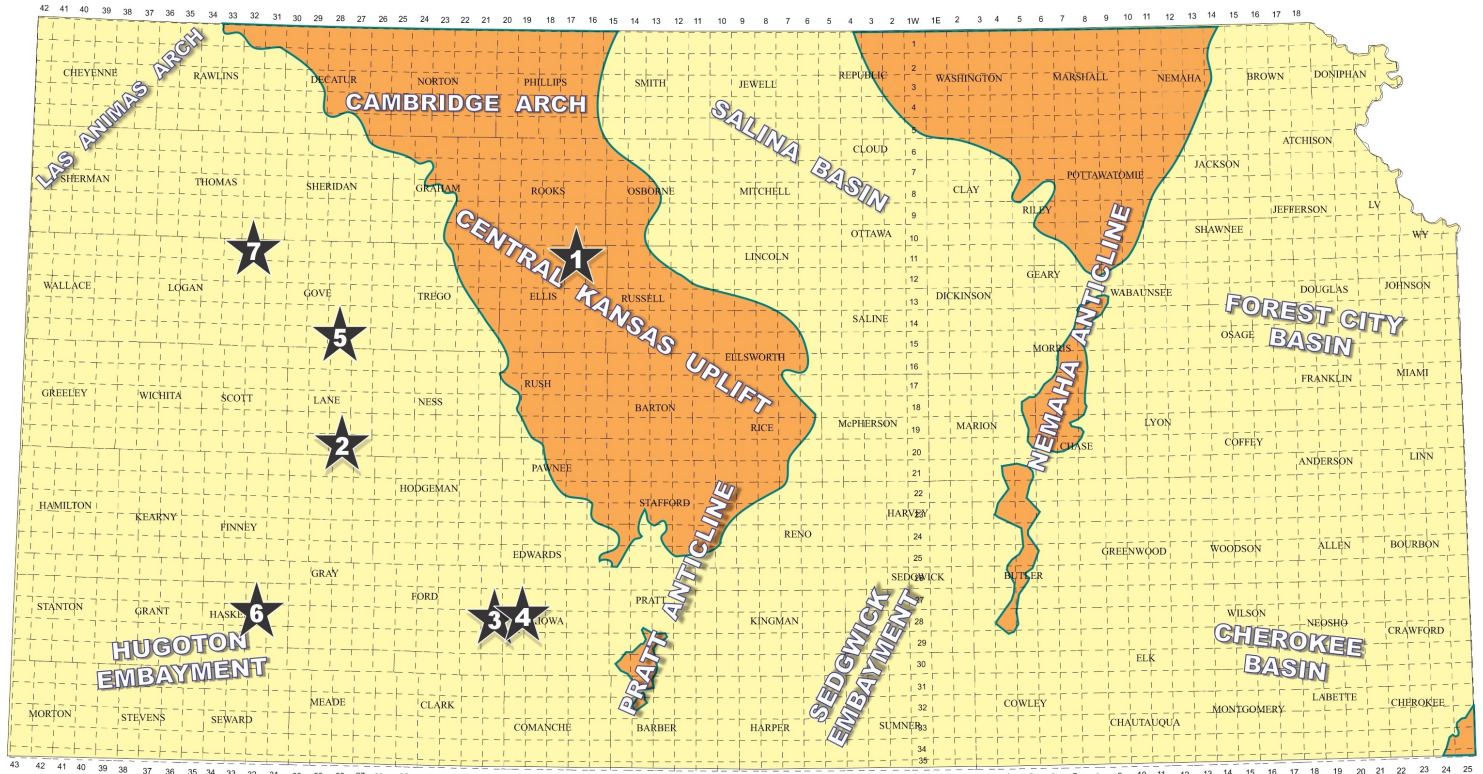
To be a Visiting Geoscientist bearing the AAPG flag, you are asked to have at least 5 years of experience and make at least one visit per year to a university. It can be a school with an AAPG Student Chapter, or a college/university without one. Your choice.

The Mid Continent schools with Student Chapters are: Missouri University, Fort Hays State University, Iowa State University, Kansas State University, Missouri State University, University of Nebraska, Northwest Missouri State University, Oklahoma State University, University of Oklahoma, University of Arkansas, University of Iowa, University of Kansas, University of Missouri, Columbia University of Tulsa and Wichita State University.

Contact Robbie Gries, co-Chair VGP committee, Denver, if you are interested in learning more. rrgries@aol.com

Exploration Highlights

By John H. Morrison, III



Map courtesy of Marc Summerville

- 1.) Anchor Bay Petroleum, LLC, Hays, KS. has successfully completed its first offsetting confirmation well in their recently established Brungardt Southwest oil field in Ellis County. The #1 Slimmer A was drilled as an east offset to Anchor Bay's #1 Simpson in the SE/4 of section 3- T11s- R17W, which discovered the new Arbuckle oil reservoir and produced 122 BO and 30 BWPD in January 2021. The #1 Slimmer A, spotted in approximately SW SW SW in section 2- T1s- R17W, was completed in August this year for 45 BO and 120 BWPD from perfs 3,450 to 3,453 ft. White Knight Drilling tools drilled the well to a total depth of 3,590 ft. Field area lies five miles south and three-quarters mile west of the town of Codell, Kansas. (ref: API 15-051-27005)
- 2.) Raymond Oil Company, Inc., Wichita, KS. is producing an undisclosed amount of crude oil at new wildcat discovery well in Lane County. The #1 Habiger - Wells Unit, spotted in approximately SWSE SE SE in section 4-T20s-R28W, found new oil reserves nearly two miles southwest of recognized production in the Stormont field (2001, Lansing-Kansas City oil). The Lansing-Kansas City limestones were targeted for exploration; however, the exact producing formation is being held confidential. L.D. Drilling tools bottomed the well at a total depth of 4,720 ft. in the Mississippian. The new unnamed oil field lies about nine miles south and three miles east of Dighton, Kansas. (ref: API 15-101-22654)
- 3.) Herman L. Loeb, LLC, Lawrenceville, IL., has stepped-out nearly one mile to the southwest of existing production in the Fralick West field (1961, Mississippian Oil & Gas) to find additional Mississippian gas reserves with the successful completion of the #1-9 Toner in Kiowa County. The Toner well, located in approximately SW NE SE SW in section 9- T28s-R20W, is producing an undisclosed amount of gas southwest of Loeb's #1-10 Breusing, NW/4 in section 10 that was completed for 500 MCFGPD and 1 BOPD from the Mississippian in 2019. Sterling Drilling drilled the Toner well to a total depth of 5,000 ft.

4.) Loeb has also recently completed the #1-10 Nina in the SW/4 of section 10, over five-eighths mile to the east of the Toner well. The well is producing an unknown amount of oil from the Mississippian and further justifies the expansion of the Fralick West field southward. Field area is located two miles north and one mile west of Mullinville, Kansas. (ref: API 15-097-21856)

5.) Citadel Oil, LLC, Edmond, OK., has successfully washed down a 'show hole' well originally drilled in 1987 and is now producing oil from the Lansing - Kansas City limestones. The #1 Davis (UU) was re-entered using Southwind Drilling tools on June 13, 2021. Well site is in approximately NW SE NW NW in section 29- T15s- R28W, about six mile north and three miles west of Utica, Kansas. Hole was cleaned out to original total depth of 4,362 ft. Completion details are confidential. Drill stem tests had indicated good shows of oil in the Lansing-Kansas City 'E' and 'L' zones. The wildcat pool discovery is situated over three-quarters mile southwest of established production in the Horchem Northwest field (1975. Lansing-Kansas City & Mississippian oil). The new field has not been named. (ref: API 15-063-21174)

6.) Presley Operating, LLC, Oklahoma City, OK. has a new pool discovery in Haskell County with the successful completion of the #1-9 SVT, C E/2 NE in section 9- T28s- R32W, in southwest Kansas. The remote wildcat well is completed for 11 BO and 192 BWPD at site located nearly one and one-half miles southeast of closest nearby production in the Prairie Dunes field (2010, Mississippian oil), and is almost two miles northeast of Lansing-Kansas City oil and gas production in the Santa Fe Northeast field (1988). Production depth is from 4,616 to 4,688 ft. overall in the Kansas City A zone. Total depth was obtained at 5724 ft. in the Mississippian Saint Louis formation. The new unnamed field lies about ten miles north and one and one-quarter miles east of Sublette, Kansas. (Ref: API 15-081-22230)

7.) Russell Oil, Inc., Edmond, OK., has discovered new Lansing – Kansas City oil reserves over three-quarter mile northeast of the Oakley South oil field (1975, LKC and Cherokee oil) in Logan County. Discovery was made at the #14-1 Ben Wieland, located in approximately NE SW SW SW in section 14- T11s- R32W, about two miles south of the town of Oakley, Kansas. Murfin Drilling tools were used to drill the well to a total depth of 4,718 ft. No completion details have been released currently. The new field has not been named. (Ref: API 15-109-21611)

KGS members please check your files

Fellow KGS members, please remember to check your files of elogs and geologist reports against the KGS paper library and the WDL before discarding them. I was contacted by John Morrison recently about a well I watched years ago that had some tops and DST info missing from his completion card. I took pics from my geo report of tops and DST results and sent them to John to update his card data. If I was to go through all of my files, I'm sure I have many logs and geo reports that are not in the files of either the KGS paper or the WDL. Before I hang things up in my career, I vow to go through all of my data and get it donated and scanned.

KCC rules allow an operator to hold information confidential for a two year period. As long as the well in question is older than the two year period, one can release the data. If one has concerns about alienating a client, of course, feel free to ask for permission.

Wes Hansen

CHANGE SERVICE REQUESTED

KGS BULLETIN
 November - December 2021

November 2021

Sun	Mon	Tue	Wed	Thu	Fri	Sat
	1	2	3 Tech Meeting	4	5	6
7	8	9 KGS Board	10	11	12	13
14	15	16	17 KGF Board	18	19	20
21	22	23	24	25 Thanksgiving Holiday	26 KGS Library Closed	27
28	29	30				

December 2021

Sun	Mon	Tue	Wed	Thu	Fri	Sat
			1	2	3	4
5	6	7	8 Tech Meeting	9	10	11
12	13	14 KGS Board	15 KGF Board	16	17	18
19	20	21	22	23	24 Christmas Holiday Library Closed	25
26	27 Christmas Holiday Library Closed	28	29	30	31	